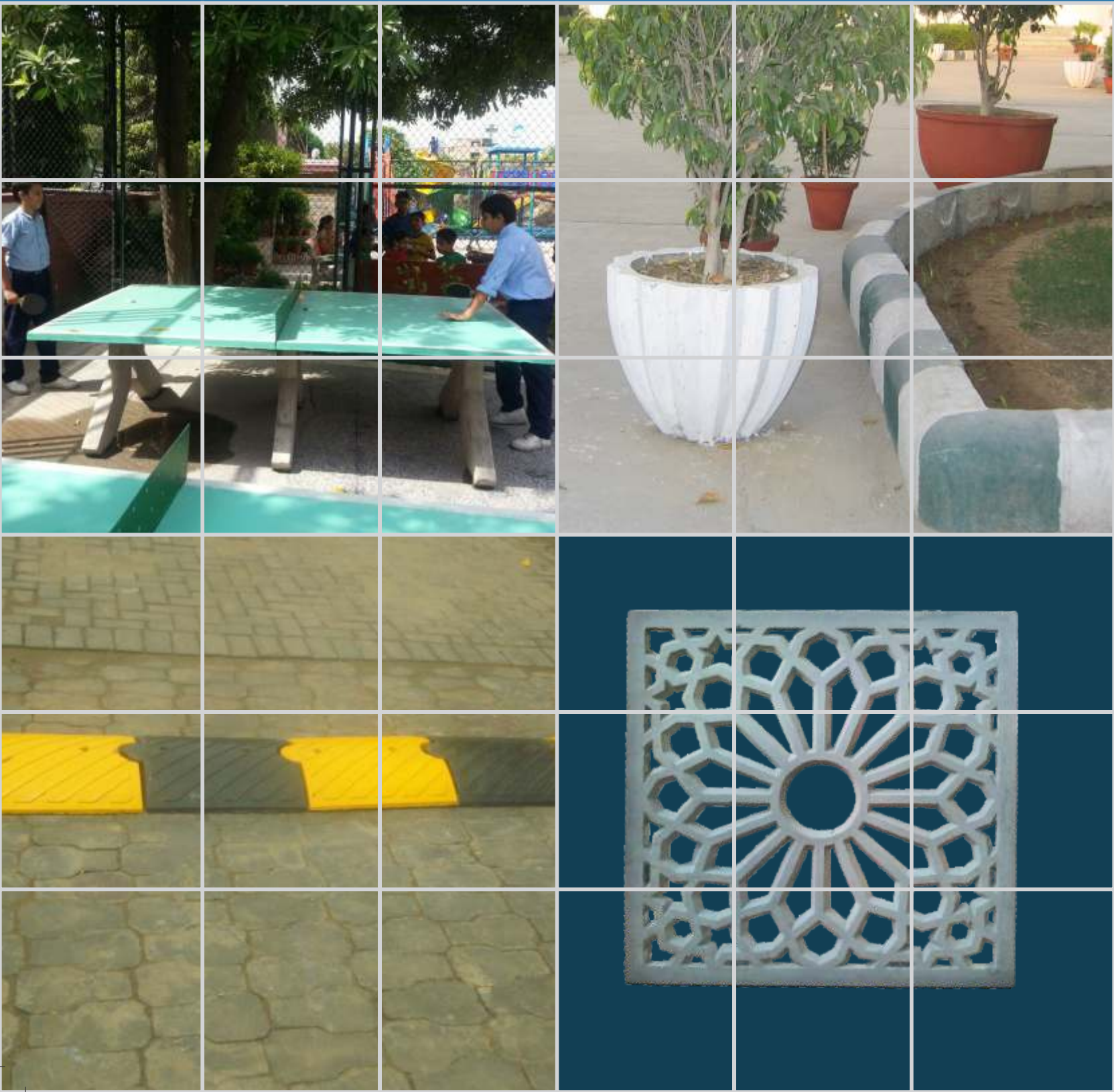




*"Home of Innovative & Quality
Solutions for Construction
since 1984"*

SPECIALIST





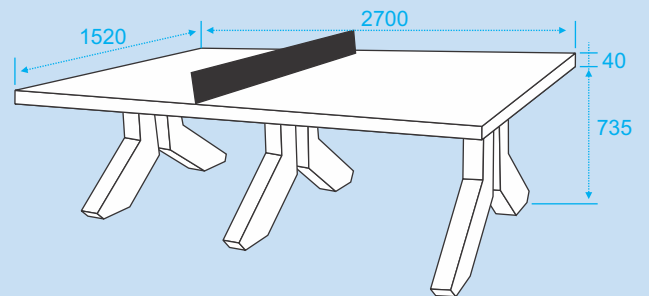
SPECIALIST

PLANTERS



Visit www.kkindia.com for more options

TT TABLE



SPEED BREAKER

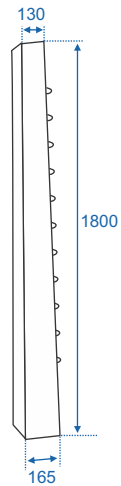


TECHNICAL INFO

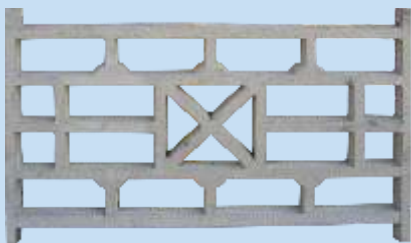
- Dimension : Length : 450mm, Width : 400mm, Height : 75mm
- Material : Polymer Concrete
- Installation : Fixed by driving two 12 mm rods through provided holes and sealing with resin



BARBED WIRE POST

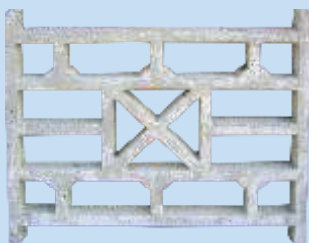


JALIS



Design 1

Length x Height x Thickness
1600 x 760 x 60



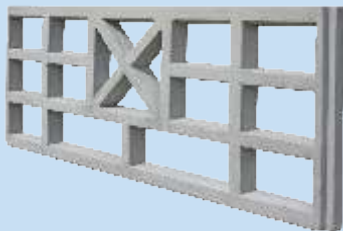
Design 2

Length x Height x Thickness
900 x 760 x 60



Design 3

Length x Height x Thickness
675 x 475 x 40/60



Design 4

Length x Height x Thickness
1500 x 600 x 65



Design 5

Length x Height x Thickness
1000 x 1000 x 50